

# MASS IN HONOR OF SAINT MAXIMILIAN COLBE

## GLORIA using the New Translation [ organist's score ]

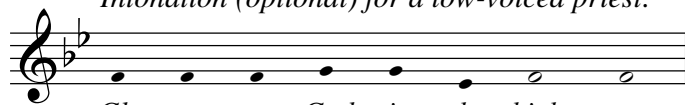
**N.B.** Although this translation has been given the *Recognitio* by Rome, it cannot be used at Mass **until** this new translation has been "finalized internationally" by the Vatican's Congregation for Divine Worship and the Sacraments.

<http://lalemantpolyphonic.org>

**Please note:** The word "people" in the second sentence of this prayer has been copyrighted by ICEL (*International Committee on English in the Liturgy, Inc.*). For more information, please visit: [ <http://www.icelweb.org/> ]

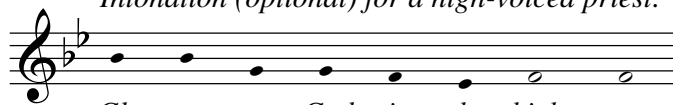
**Jeff Ostrowski**  
(2009)

*Intonation (optional) for a low-voiced priest:*



Glo - ry to God in the high - est.

*Intonation (optional) for a high-voiced priest:*



Glo - ry to God in the high - est.

*If the priest does not intone,  
this organ introduction is played:*



Organ introduction in G major, 3/4 time. The piece begins with a treble clef and a key signature of one flat (F major). It features a melodic line in the right hand and a supporting bass line in the left hand. The tempo is marked with a fermata over the first measure.

Glo-ry to God in the high - est, And on earth peace to

peo - ple of good will. We praise - You, We bless - You, We a - dore



Organ accompaniment for the first line of lyrics. The music is in G major, 3/4 time, with a treble and bass clef. It features a melodic line in the right hand and a supporting bass line in the left hand.

You, We glo - ri - fy - You. We give You thanks for Your great -



Organ accompaniment for the second line of lyrics. The music is in G major, 3/4 time, with a treble and bass clef. It features a melodic line in the right hand and a supporting bass line in the left hand.

glo - ry. Lord God, heav-en - ly King, O God, al - might - y Fath -



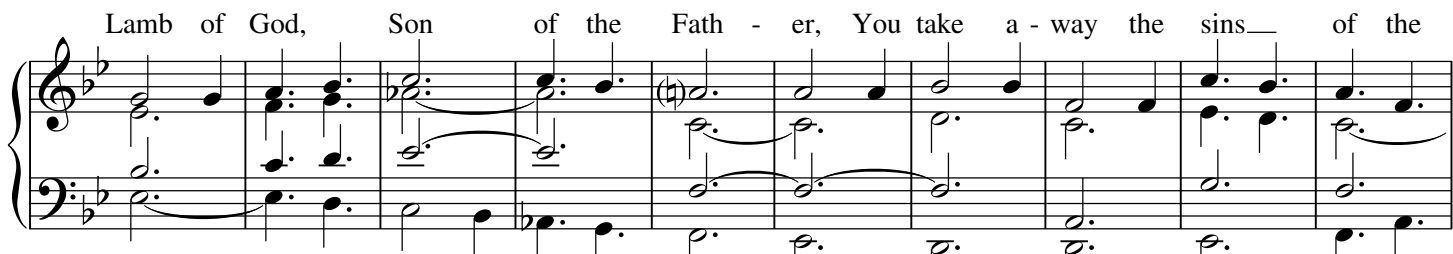
Organ accompaniment for the third line of lyrics. The music is in G major, 3/4 time, with a treble and bass clef. It features a melodic line in the right hand and a supporting bass line in the left hand.

er. Lord Je - sus Christ, On - ly Be - got - ten Son, Lord God,

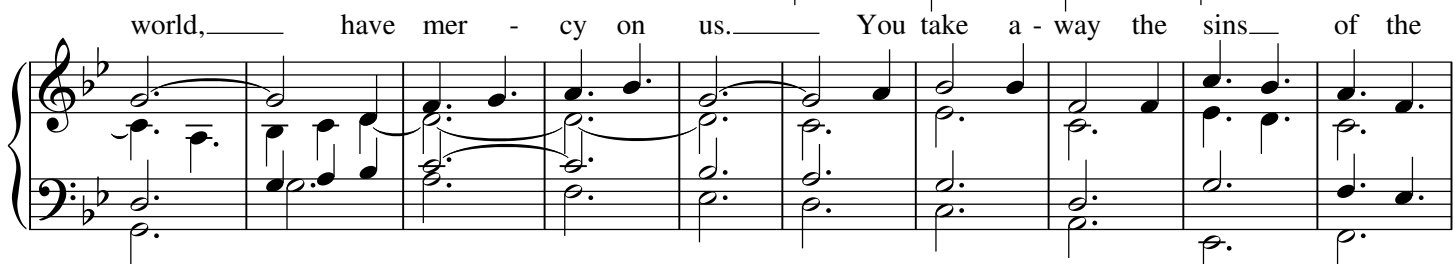


Organ accompaniment for the fourth line of lyrics. The music is in G major, 3/4 time, with a treble and bass clef. It features a melodic line in the right hand and a supporting bass line in the left hand.

Lamb of God, Son of the Fath - er, You take a - way the sins of the



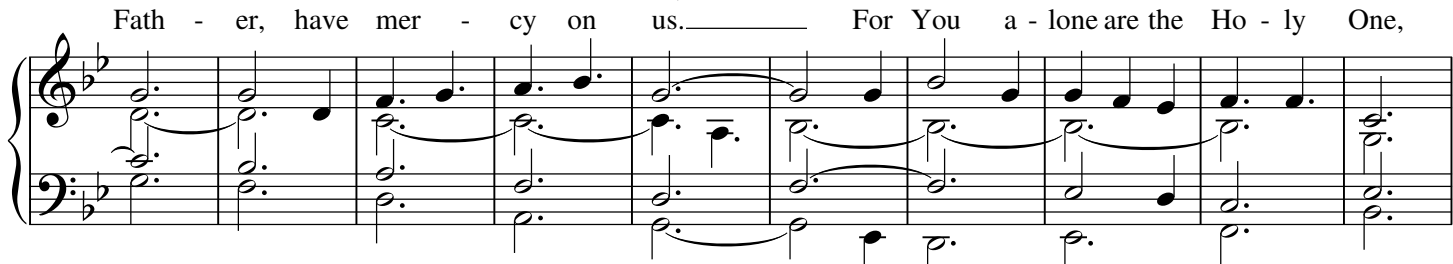
world, have mer - cy on us. You take a - way the sins of the



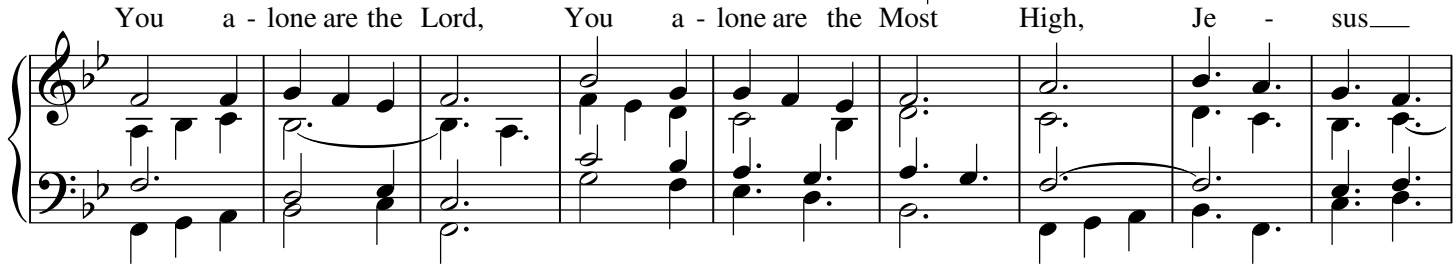
world, re - ceive our prayer. You are seat - ed at the right hand of the



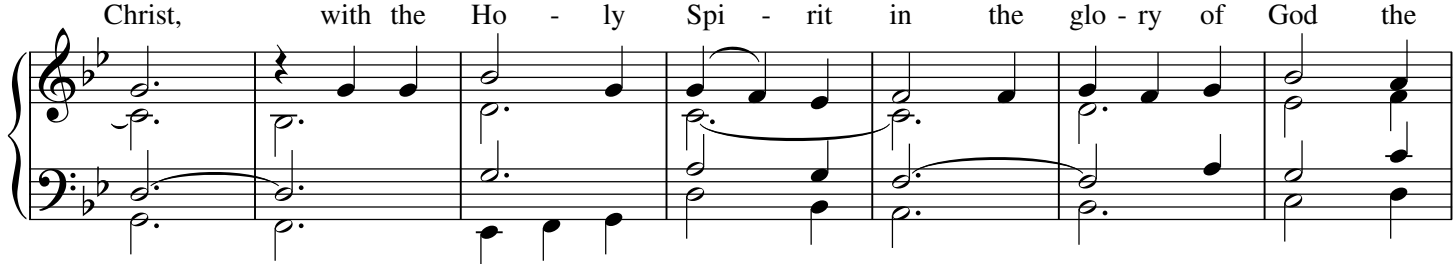
Fath - er, have mer - cy on us. For You a - lone are the Ho - ly One,



You a - lone are the Lord, You a - lone are the Most High, Je - sus



Christ, with the Ho - ly Spi - rit in the glo - ry of God the



Fa - ther. A - - - men.

