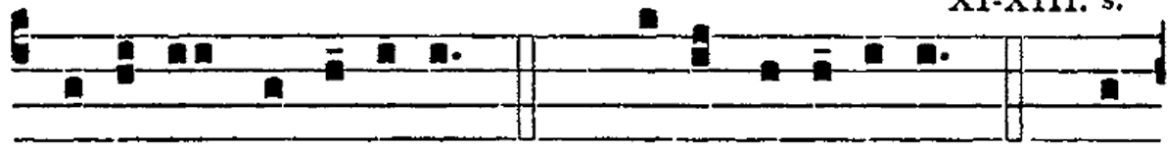


XVI. — In feriis per annum.

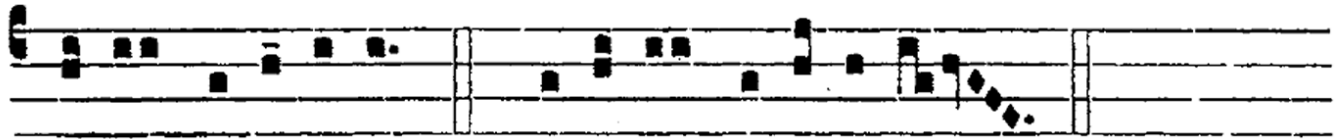
XI-XIII. s.

3.

K



Y-ri- e * e-lé- i-son. *ij.* Christe e-lé- i-son. *ij.* Ký-



ri- e e-lé- i-son. *ij.* Ký-ri- e * e-lé- i-son.

NOVA ORGANI HARMONIA

Ky - ri - e * e - lé - i - son. Ky - ri - e e - lé - i - son.

III.



Ky - ri - e e - lé - i - son, Chri - ste e - lé - i - son. Chri - ste e -



- lé - i - son. Chri - ste e - lé - i - son. Ky - ri - e e - lé - i - son.



Ky - ri - e e - lé - i - son. Ky - ri - e * e - lé - i - son.

