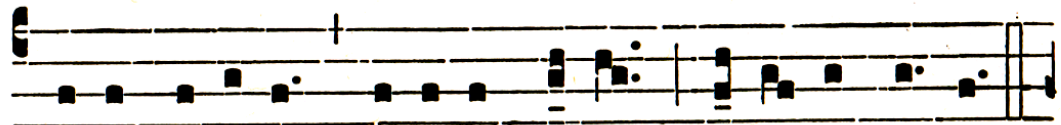


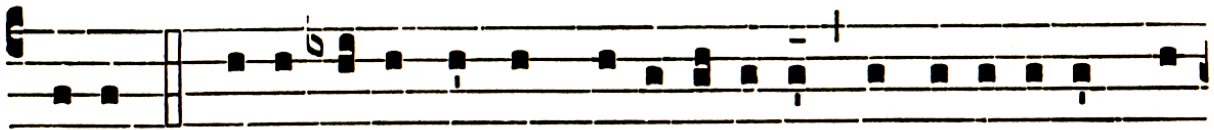
ccwatershed.org

VI.

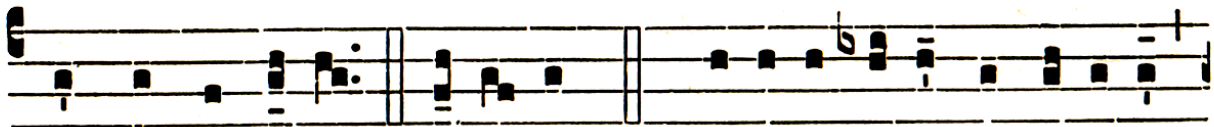
A



- ve Ma-rí- a, grá-ti- a ple-na : *Dómi-nus te-cum.



Ave. Ψ . Bene- dícta tu in mu-li- é-ri-bus, et bene- díctus fru-



ctus ventris tu- i. *Dómi-nus. Ψ . Gló-ri- a Patri, et Fí- li- o,



et Spi-rí-tu- i Sancto. Ave.